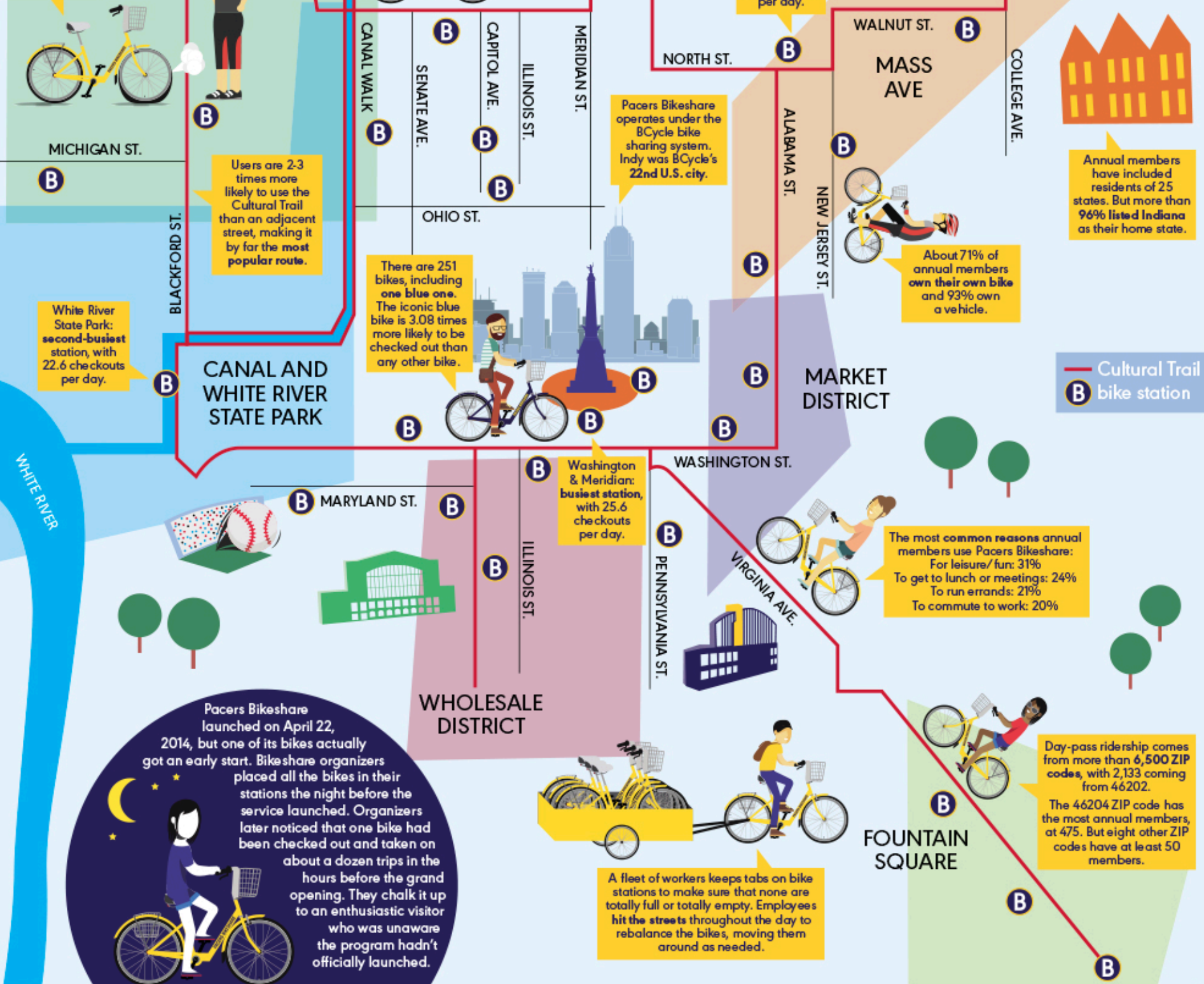


BIKESHARE by the numbers

Each bike gets a checkup every 30 days. The most common issue is flat tires.

At any given time, about 190 bikes are active. The others are either undergoing maintenance or are reserved/in use for group rides and tours.

The top three riders in 2015 logged more than 3,100 miles among them:
Adam Shoemaker, 1,287 miles
Andrew Werner, 966 miles
Butch Gross, 901 miles



Users are 2-3 times more likely to use the Cultural Trail than an adjacent street, making it by far the most popular route.

There are 251 bikes, including one blue one. The iconic blue bike is 3.08 times more likely to be checked out than any other bike.

Pacers Bikeshare operates under the BCycle bike sharing system. Indy was BCycle's 22nd U.S. city.

Mass Ave at Alabama: third-busiest station, with 19.7 checkouts per day.

About 71% of annual members own their own bike and 93% own a vehicle.

Annual members have included residents of 25 states. But more than 96% listed Indiana as their home state.

White River State Park: second-busiest station, with 22.6 checkouts per day.

Washington & Meridian: busiest station, with 25.6 checkouts per day.

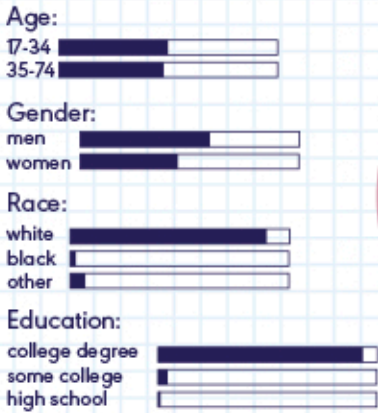
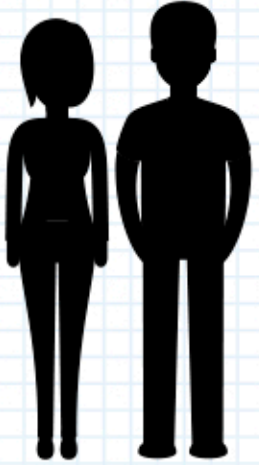
The most common reasons annual members use Pacers Bikeshare:
For leisure/fun: 31%
To get to lunch or meetings: 24%
To run errands: 21%
To commute to work: 20%

Pacers Bikeshare launched on April 22, 2014, but one of its bikes actually got an early start. Bikeshare organizers placed all the bikes in their stations the night before the service launched. Organizers later noticed that one bike had been checked out and taken on about a dozen trips in the hours before the grand opening. They chalk it up to an enthusiastic visitor who was unaware the program hadn't officially launched.

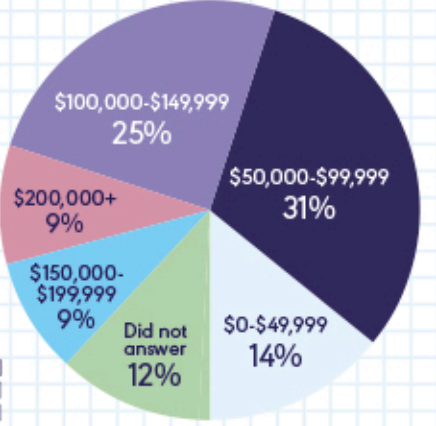
A fleet of workers keeps tabs on bike stations to make sure that none are totally full or totally empty. Employees hit the streets throughout the day to rebalance the bikes, moving them around as needed.

Day-pass ridership comes from more than 6,500 ZIP codes, with 2,133 coming from 46202. The 46204 ZIP code has the most annual members, at 475. But eight other ZIP codes have at least 50 members.

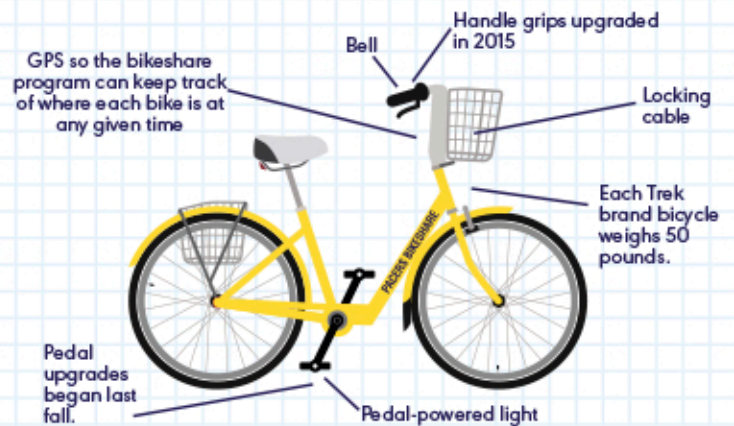
ANATOMY OF A RIDER



Household income:



ANATOMY OF A BIKE



Sources: Indianapolis Cultural Trail; Pacers Bikeshare 2015 Survey of annual members (About 25% of members—327 people—responded to the survey although not all respondents answered all questions.)