

Heritage Place of Indianapolis Inc.

4550 N. Illinois St.
Indianapolis, IN 46208
Phone: 283-6662
Fax: 283-6669
Web site: www.heritageplaceindy.org
Founded: 1976



Schroeder



McNally



Boezeman

Paid employees: 45
Highest-paid staff member: Ruth Ann Schroeder, executive director, \$54,860

Top volunteers: Mike McNally, board president, three years; Don Boezeman, treasurer, four years

MISSION

Provide older adults with comprehensive and coordinated human services to encourage and promote healthy lifestyles, independence, well-being and quality of life.

MANAGEMENT

Ruth Ann Schroeder, executive director
JoAnn Wilson, case manager
Susan Osburn, office manager

BOARD OF DIRECTORS

Mike McNally, president
Rob Baker, vice president
Don Boezeman, treasurer
Suzanne Flynn, secretary
Stu Buttrick
Phil Jones
Fengyi Kuo

Darrioux Peterson
Steve Richards
Matt Schafer
Lizzie Schuerman
Chad Slaughter
Kelly Lamm Teller
Charles Williams

PROGRAMS

Friendly visiting – Heritage Place is the largest station in central Indiana for the federal Senior Companion Program. Every week, more than 30 companions each spend 20 hours visiting disabled, homebound elderly clients. They share interests, light meals and conversation. (The companions are low-income senior citizens who receive a small stipend of \$2.65 per hour, under federal guidelines.)

Center-based activities – Heritage Place schedules a wide assortment of educational classes, up-to-date legal and financial information, health services, social events, and physical fitness sessions. Examples are computer class, book club, bridge class, chair exercise class, line dance class, wills seminar, water aerobics class, piano lessons, flu shots, holiday celebration, tax form preparation, and foot care clinic. Visit the Web site for the current calendar of activities.

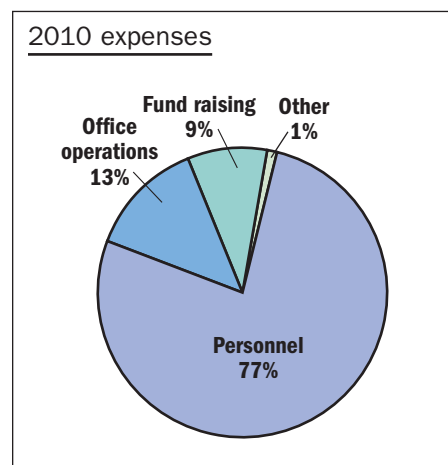
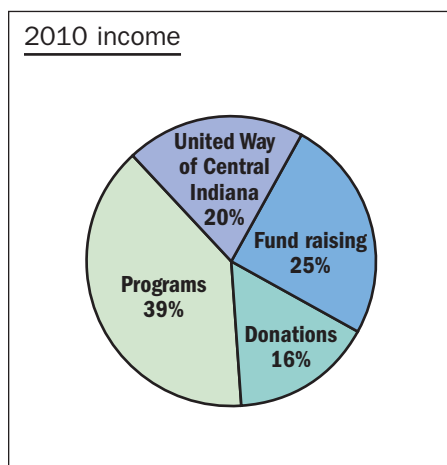
FUND-RAISER

Hoosier Heritage Night is a banquet and auction with an awards presentation honoring six people from central Indiana for lifetime achievement. The June 2009 event raised \$37,096.

FINANCIAL PROFILE

2009 income: \$314,140
2009 expenses: \$317,170
2009 assets: \$113,515

2010 projected income: \$313,315
2010 projected expenses: \$313,315
Fiscal year begins: July 1



Information was provided by Heritage Place of Indianapolis Inc. Profiled organizations must be based in or serve the Indianapolis area, must have Internal Revenue Service tax-exempt status, and must be willing to provide IBI with detailed financial information.